

the **NITRO** Xpress
is the **WAY** to
manage potential
avalanche **threats**
in the most **COST EFFECTIVE** way

SNOWTEK
Systems

Andy Marshall
Sales

M +64 21 431 103
F +64 6 323 0918

11 Stafford Street, Feilding,
New Zealand

E andy@snowteksystems.com

Giles Russell
Technical Support

M +64 274 272 379
F +64 6 323 0918

11 Stafford Street, Feilding,
New Zealand

E giles@snowteksystems.com



NITRO Xpress
PARTS MANUAL 01.12.08



© PREPARED BY
SNOWTEK
Systems Ltd



Part No. **TR 001**
Description **Valve Cylinder**



Part No. **TR 002**
Description **Valve Inner**



Part No. **TR 003**
Description **Nose Cone**



Part No. **TR 004**
Description **Piston**



Part No. **TR 005**
Description **Breech End Plate**



Part No. **TR 006**
Description **Breech Retainer**



Part No. **TR 007**
Description **Breech plug**



Part No. **TR 008**
Description **Breech locking ring**



Part No. **TR 009**
Description **Breech Locking Ring Handle**



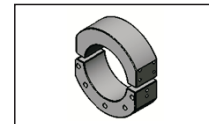
Part No. **TR 010**
Description **Breech Slide**



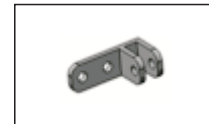
Part No. **TR 011**
Description **Breech Slide Guide**



Part No. **TR 012**
Description **Seal Kit**



Part No. **TR 013**
Description **Barrel Locking Clamp**



Part No. **TR 014**
Description **Elevating Ram Top Retainer**



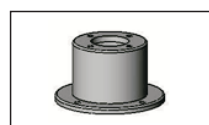
Part No. **TR 015**
Description **Control Panel**



Part No. **BR 001**
Description **Elevating Ram**



Part No. **BR 002**
Description **Side Plate**



Part No. **BR 003**
Description **Gearbox Spacer**



Part No. **BR 004**
Description **Gearbox**



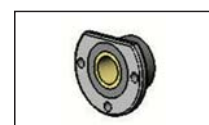
Part No. **BR 005**
Description **Coupling**



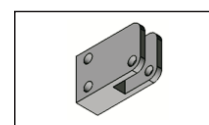
Part No. **BR 006**
Description **Side Plate Support**



Part No. **BR 007**
Description **Hand Wheel**



Part No. **BR 008**
Description **Trunion Bearing**



Part No. **BR 009**
Description **Elevating Ram Bottom Retainer**



Part No. **BR 010**
Description **Brake Shoe**



Part No. **BR 011**
Description **Brake Actuator**



Part No. **CR 001**
Description **4m Fluted Barrel**



Part No. **VR 001**
Description **Main Pressure Gauge**



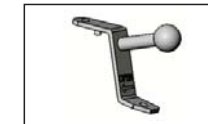
Part No. **VR 002**
Description **Valve Pressure Gauge**



Part No. **VR 003**
Description **Gas Regulator And Hose**



Part No. **VR 004**
Description **Safety Valve**



Part No. **VR 005**
Description **Safety Valve Actuator**



Part No. **VR 006**
Description **Seat/Charge Valve**



Part No. **VR 007**
Description **Release Valve**



Part No. **VR 008**
Description **Pressure Relief Valve**



Part No. **VR 009**
Description **Unidirectional Check Valve**



Part No. **VR 010**
Description **5/8 Pipe Tee**



Part No. **VR 011**
Description **1/4 Tee**



Part No. **VR 012**
Description **5/8 Elbow**



Part No. **VR 013**
Description **1/4 Elbow**



Part No. **VR 014**
Description **5/8 Coupler**



Part No. **VR 015**
Description **1/4 Coupler**



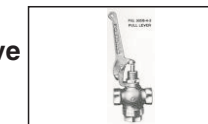
Part No. **VR 016**
Description **Inlet Snap Coupler**



Part No. **VR 017**
Description **Firing Snap Coupler**



Part No. **VR 018**
Description **Firing Sciencer**



Part No. **VR 019**
Description **Manual Firing Valve**



Part No. **ER 001**
Description **Electric Release Charger**



Part No. **ER 002**
Description **Electric Release Firing Control**



Part No. **ER 003**
Description **Electric Firing Valve**



Part No. **ER 004**
Description **Spare Battery for Firing Control**



Part No. **AC 01**
Description **Elevation Meter**



Part No. **AC 02**
Description **Cover**